



Lexmark XM3250

The Lexmark XM3250 offers printing at up to 50 pages per minute*, enhanced security, high productivity and thoughtfully engineered durability.

Part Number

36S0940

Print Technology

Monochrome Laser

Function

Color Scanning, Copying, Faxing, Network Scanning, Printing

Workgroup Size

Medium-Large Workgroup

Touch Screen Display

Yes

Display

Lexmark e-Task 7-inch (17.8 cm) color touch screen

Print Speed (Letter, Black)

Up to 50 ppm⁶

Print Speed (Letter, Black) Duplex

Up to 24 spm⁶

Time to First Page (Black)

As fast as 6 seconds

Duplex (2-sided) Printing

Integrated Duplex

Print Resolution, Black

1200 Image Quality, 1200 x 1200 dpi, 2400 Image Quality, 600 x 600 dpi

Copy Speed (Letter, Black)

Up to 50 cpm⁶

Copy Speed (Letter, Black) Duplex

Up to 24 spm⁶

Time to First Copy (Black)

As fast as 6 seconds

Reduce / Enlarge Range

25 - 400 %

A4/Ltr Simplex Scan Speed (Black)

Up to 47 / 50 sides per minute

A4/Ltr Simplex Scan Speed (Color)

Up to 30 / 32 sides per minute

A4/Ltr Duplex Scan Speed (Black)

Up to 94 / 100 sides per minute

A4/Ltr Duplex Scan Speed (Color)

Up to 60 / 64 sides per minute

Scan Area, Maximum

8.5 x 14 inches

ADF Scan

DADF (single pass Duplex)

Scanner Type

Flatbed scanner with ADF

Scan Technology

CCD

Optical Scanning Resolution

up to 600 X 600 ppi (color), up to 1200 X 600 ppi (black)

Scan File Formats (Send as)

JPEG, JPG, PDF, Secure PDF, TIFF, XPS, Archival PDF (A-1a, A-1b), Searchable PDF (optional OCR with 1GB RAM and hard disk required), Highly compressed PDF (1GB RAM and hard disk required)

Scan Destinations

e-mail, FTP, USB Flash drive, USB or Network connected computer, Lexmark Document Solutions Suite (LDSS)

Modem Speed

ITU T.30, V.34 Half-Duplex, 33.6 Kbps

Fax Transmission Speed

< 3 seconds per page

Processor

Quad Core, 1200 MHz

Memory, Standard

2048 MB

Memory, Maximum

2048 MB

Hard Disk

Option available

Apple Operating Systems Supported

Apple OS X (10.6, 10.7, 10.8, 10.9, 10.10, 10.11, 10.12)

Citrix MetaFrame

Microsoft Windows 2000 Server running Terminal Services with Citrix MetaFrame XP Presentation Server or Citrix MetaFrame Presentation Server 3.0., Microsoft Windows 2000 Server running Terminal Services with Citrix Presentation Server 4.0, Microsoft Windows 2000 Server running Terminal Services with Citrix Presentation Server 3.0, 4.0, Microsoft Windows Server 2012 with Citrix XenApp 6.0, 6.5

Linux Operating Systems Supported

Debian GNU/Linux 7.0, 8.0, SUSE Linux Enterprise Server 10, 11, 12, openSUSE Linux 13.2, Ubuntu 16.04 LTS, Fedora 23, 24, Red Hat Enterprise Linux WS 6, 7, openSUSE Linux 42.3

Microsoft Windows Operating Systems Supported

Windows 7, Windows 7 x64, Windows 8, Windows 8 x64, Windows 8.1, Windows 8.1 x64, Windows 10

Novell Operating Systems Supported

Novell NetWare 6.5 Open Enterprise Server, Novell NetWare 5.1(SP 6+), 6.0(SP 3+) with Novell Distributed Print Services (NDPS), Novell Open Enterprise Server on SUSE Linux Enterprise Server, Novell Open Enterprise Server 2 on SUSE Linux Enterprise Server 10 SP4, Novell Open Enterprise Server 11 on SUSE Linux Enterprise Server 11, Novell Open Enterprise Server 2 SP2 on SuSE Linux Enterprise Server 10 SP3 3

UNIX Operating Systems Supported

Sun Solaris x86 10, 11, Sun Solaris SPARC 10, 11, IBM AIX 6.1, 7.1

Included Paper Handling

550-Sheet Input, 100-Sheet Multipurpose Feeder, Integrated Duplex, 250-Sheet Output Bin

Optional Paper Handling

250-Sheet Tray, 550-Sheet Tray, 550-Sheet Lockable Tray, Inline Stapler

Paper Input Capacity, Standard

Up to 650 pages 20 lb or 75 gsm bond

Paper Input Capacity, Maximum

Up to 2300 pages 20 lb or 75 gsm bond

Paper Output Capacity, Standard

Up to 250 pages 20 lb or 75 gsm bond

Paper Output Capacity, Maximum

Up to 250 pages 20 lb or 75 gsm bond

Paper Weight Range Supported - Standard Tray (lb.)

16 - 32 lb.

ADF

100-Sheet Automatic Document Feeder

ADF Paper Input Capacity

Up to 100 pages 20 lb or 75 gsm bond

ADF Paper Output Capacity

Up to 100 pages 20 lb or 75 gsm bond

Finishing Option

Yes

Number of Paper Inputs, Standard

2

Number of Paper Inputs, Maximum

5

Media Types Supported

Card Stock, Envelopes, Paper Labels, Plain Paper, Transparencies, Refer to the Card Stock & Label Guide.

Media Sizes Supported

10 Envelope, 7 3/4 Envelope, 9 Envelope, A4, A5, DL Envelope, Executive, Folio, JIS-B5, Legal, Letter, Statement, Universal, Oficio, A6

Standard Ports

One Internal Card Slot, USB 2.0 Specification Hi-Speed Certified (Type B), Gigabit Ethernet (10/100/1000), Front USB 2.0 Specification Hi-Speed Certified port (Type A), Rear USB 2.0 Specification Hi-Speed Certified Port (Type A)

Optional Local Ports

Internal RS-232C serial, Internal 1284-B Bidirectional Parallel

Optional Network Ports

Marknet N8372 WiFi Option

Direct USB

Yes

Ethernet Network

Yes

Wireless

Wireless Option

Network Protocol Support

TCP/IP IPv4, AppleTalk™, TCP/IP IPv6, TCP, UDP

Network Printing Methods

LPR/LPD, Direct IP (Port 9100), Enhanced IP (Port 9400), Secure IP (Port 96xx), FTP, TFTP, ThinPrint .print integration, IPP 1.0, 1.1, 2.0 (Internet Printing Protocol), Microsoft Web Services WSD, Pull Printing

Network Management Protocols¹

HTTP, HTTPS (SSL/TLS), SNMPv1, SNMPv2c, SNMPv3, WINS, IGMP, BOOTP, RARP, APIPA (AutoIP), DHCP, ICMP, DNS, DDNS, mDNS, ARP, NTP, Telnet, Finger,

Network Security

SNMPv3, 802.1x Authentication: MD5, MSCHAPv2, LEAP, PEAP, TLS, TTLS, IPsec

Printable Area

0.157 inches of the top, bottom, right and left edges (within)

Printer Languages (Standard)

PCL 5e Emulation, PCL 6 Emulation, Personal Printer Data Stream (PPDS), PostScript 3 Emulation, Direct Image, Microsoft XPS (XML Paper Specification), AirPrint™, PDF 1.7 emulation

Fonts and Symbol Sets

3 of 9 scalable PCL 5e fonts in Narrow, Regular and Wide, 2 PCL bitmap fonts, 39 scalable PPDS fonts, 5 PPDS bitmap fonts, 84 scalable PCL fonts, OCR-A, OCR-B scalable PCL 5e fonts, For more information, refer to the Technical Reference., 91 scalable PostScript fonts

Laser Cartridge Yields (up to)⁵

, 21,000-page Cartridge

Imaging Unit Estimated Yield

Up to 60000 pages, based on 3 average letter/A4-size pages per print job and ~ 5% coverage⁴

Cartridge(s) Shipping with Product

6,000-page Starter Return Program Toner Cartridge

Replacement Cartridges:

Product functions only with replacement cartridges designed for use in a specific geographical region. See www.lexmark.com/ regions for more details.

Packaged Size (in. - H x W x D)

26.85 x 21.73 x 23.82 in.

Packaged Weight (lb.)

58.60 lb.

Size (in. - H x W x D)

21.5 x 19.3 x 18.8 in.

Weight (lb.)

49.2 lb.

Noise Level, Idle

14 dBA

Noise Level (Print), Operating

55 dBA

Duplex Print Noise Level, Operating

54 dBA

Noise Level (Copy), Operating

56 dBA

Noise Level (Scan), Operating

55 dBA

ENERGY STAR

Yes

Average Power (Hibernate Mode)

0.1 watts

Average Power (Sleep Mode)

2.5 watts

Average Power (Ready Mode)

16.5 watts

Average Power (Printing)

670 watts

Average Power (Copying)

680 watts

Average Power (Scanning)

23.5 watts

ENERGY STAR Typical Electricity Consumption (TEC)

2.1 kilowatt-hours per week

Limited Warranty - See Statement of Limited Warranty

1-Year Onsite Service, Next Business Day

Product Certifications

ENERGY STAR, ICES-003 Class B, BSMI Class B, VCCI Class B, US FDA, UL 60950-1, FCC Class B, cUL CAN/CSA-C22.2 60950-1, NOM, CB EN/IEC 60950-1, CB EN/IEC 60825-1, CE DoC (EN 62301 Class B, EN 62311, CE EN/IEC 60950-1, CE EN/IEC 60825-1, EN 61000-3, EN 55022 Class B, EuP, EN 55024, UL), EFTA (CE), KCC, CCC, CECP, CEL, C-tick DoC, UL-AR, KC mark, UL GS mark, EC 1275, MET-I, ISO 532B, ECMA-370, TED, GOST-R, SII, TER

Maximum Monthly Duty Cycle

Up to 175000 pages per month³

Recommended Monthly Page Volume

2000 - 20000 pages²

Specified Operating Environment

Humidity: 8 to 80% Relative Humidity, Temperature: 10 to 32°C (50 to 90°F), Altitude: 0 - 5000 Meters (16,404 Feet)

License/Agreement Terms

Printers are sold subject to certain license/agreement conditions. See www.lexmark.com/ printerlicense for details.

Country of Origin

China (PRC)

UNSPSC Code

43212110

Harmonized Tariff Code

8443.31.0000

¹This product includes software developed by the OpenSSL Project for use in the OpenSSL Toolkit. (<http://www.openssl.org/>)

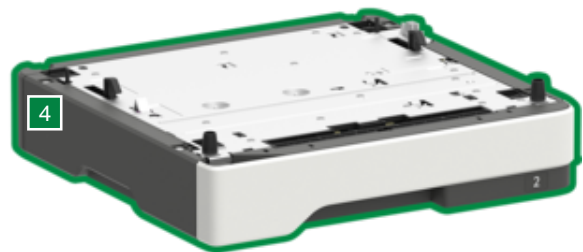
²"Recommended Monthly Page Volume" is a range of pages that helps customers evaluate Lexmark's product offerings based on the average number of pages customers plan to print on the device each month. Lexmark recommends that the number of pages per month be within the stated range for optimum device performance, based on factors including: supplies replacement intervals, paper loading intervals, speed, and typical customer usage.

³"Maximum Monthly Duty Cycle" is defined as the maximum number of pages a device could deliver in a month using a multishift operation. This metric provides a comparison of robustness in relation to other Lexmark printers and MFPs.

⁴Actual Yield may vary based on other factors such as device speed, paper size and feed orientation, toner coverage, tray source, percentage of black-only printing and average print job complexity.

⁵Average yield based on approximately 5% print coverage.

⁶Print and copy speeds measured in accordance with ISO/IEC 24734 and ISO/IEC 24735 respectively (ESAT). For more information see: www.lexmark.com/ISOspeeds.



Callout	Availability	Description
1	Standard	7-Inch (17.8-cm) Touch Screen
2	Standard	100-Sheet Multipurpose Feeder
3	Optional	550-Sheet Input
4	Optional	250-Sheet Tray / 550-Sheet Tray

P/N Toner Cartridges

56FOZA0	Lexmark 56FOZA0 Black Imaging Unit
56F0Z00	Lexmark 56F0Z00 Black Return Program Imaging Unit
24B6885	Lexmark 24B6885 Black Toner Cartridge
24B6886	Lexmark 24B6886 Black Toner Cartridge
24B6887	Lexmark 24B6887 Black Toner Cartridge
35S8500	Staple Cartridges

P/N Paper Handling

36S2910	250-Sheet Tray
36S3110	550-Sheet Tray
36S3120	550-Sheet Lockable Tray
36S8010	MX62x Stapler

P/N Furniture

3073173	Swivel Cabinet
35S8502	Adjustable Printer Stand

P/N Memory Options

27X0400	500+ GB Hard Disk
57X9801	256MB Flash Memory Card
57X9814	Korean Font Card
57X9815	Japanese Font Card
57X9812	Simplified Chinese Font Card
57X9810	Traditional Chinese Font Card

P/N Application Solutions

40C9201	Card for IPDS
40C9200	Forms and Bar Code Card
40C9202	Card for PRESCRIBE Emulation
57X0300	Contact Authentication Device
57X0301	Contactless Authentication Device
57X0310	Contact Authentication Device with Software

P/N Connectivity

27X6410	Lexmark MarkNet N8372 802.11 a/b/g/n/ac Wireless Print Server
27X0912	Lexmark MarkNet™ N8230 Fiber Ethernet Print Server
1021231	Parallel Cable (10-foot)
1021294	USB Cable (2-meter)
27X0900	RS-232C Serial Interface Card
SPD0001	Surge Protective Device, 110-120V