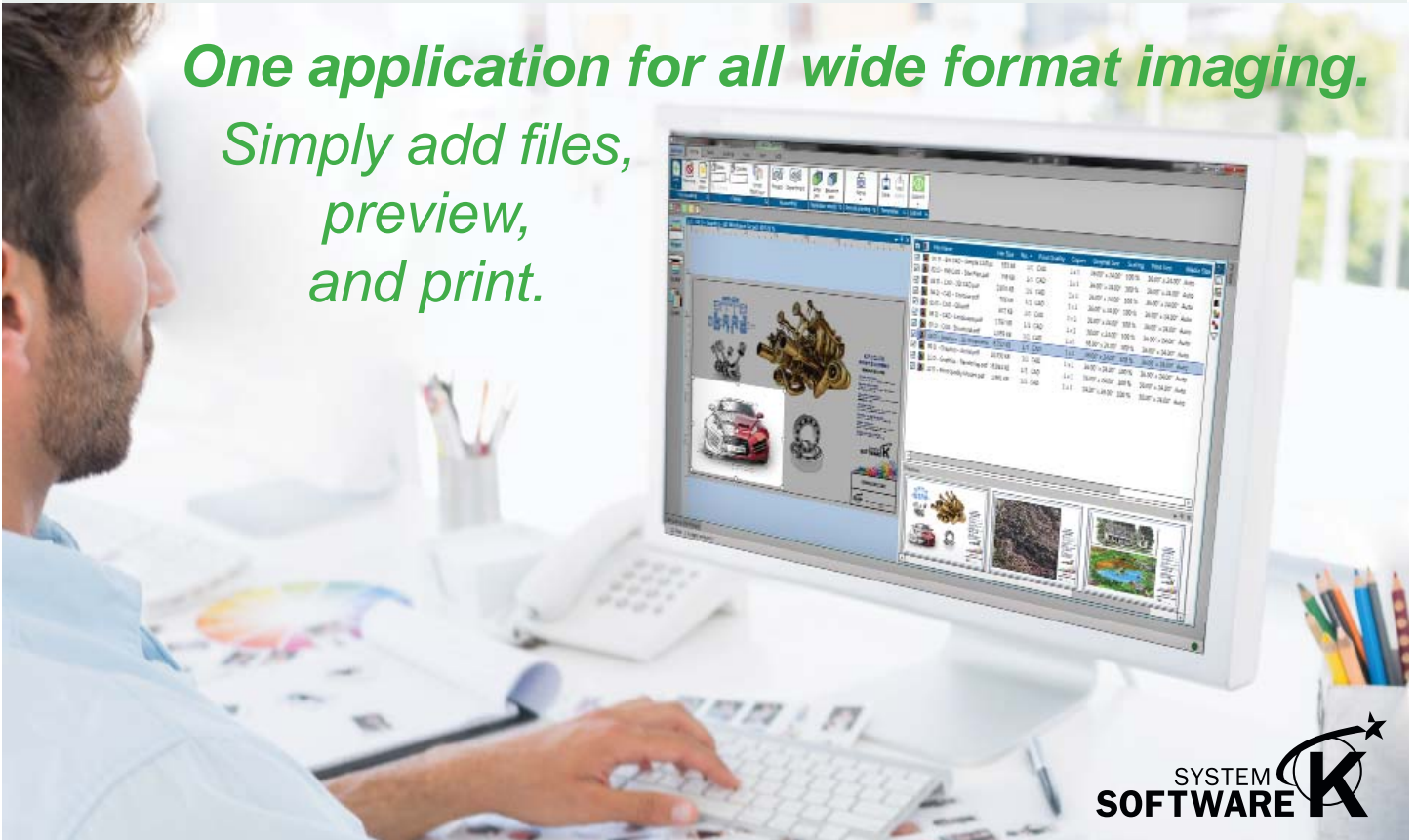




## Imaging Performance Intelligence

Print, Copy and Scan brilliantly. KIP ImagePro provides job creation, image capture & reproduction for high demand environments.

*One application for all wide format imaging.  
Simply add files,  
preview,  
and print.*



KIP ImagePro is a single software solution designed to simplify every stage of color and black & white wide format workflow.

KIP ImagePro offers intuitive standard mode for production efficiency or expanded mode for intelligent image interaction. One application for wide format Print, Copy and Scanning.



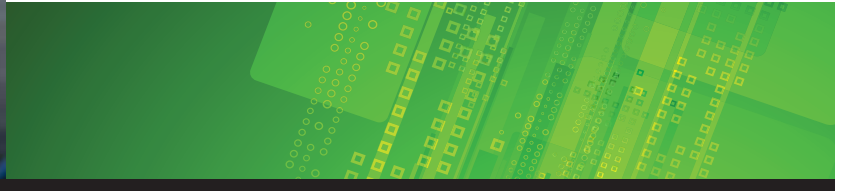
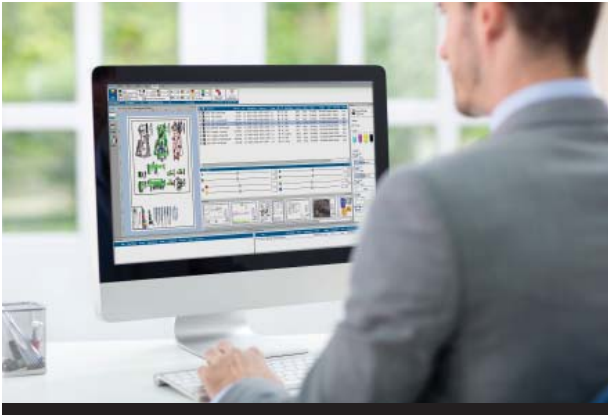
PRINT



COPY



SCAN



KIP ImagePro is powerful suite of software that combines essential tools with brilliant multitasking in an easy to use application for Print, Copy and Scan. The Standard Interface presents production operators or occasional users with Quick Access tools, an HD Viewer for Area of Interest printing and intuitive job editing functions. With standardized CAD and Graphics Print Quality Presets, ImagePro is the simplest and fastest way to print.

Engaged by a simple click, the expanded feature set puts technical and graphic professionals in the driver's seat. Nesting, Paneling, Spot Color Exchange and access to Color Management features only available in expensive graphic RIPs, KIP ImagePro delivers the tools color experts need to get the job done right.

## Standard Mode Features

Fast and easy print control

### Column Logic for Job Building, Scanning & Copying

Quickly resize, change Print or Scan Quality Presets for single pages or the entire job. Adjust page order with Drag/drop or cut/paste.

### High Definition Viewer

Zoom in or out on any image for intense detail and accurately view settings prior to printing. What you see is what you print - saves time and money!

### Area of Interest: in Prints, Scans and Copies

AOI includes sizing and pan tools to select only what you want. Eliminates waste!

### SmartStacking

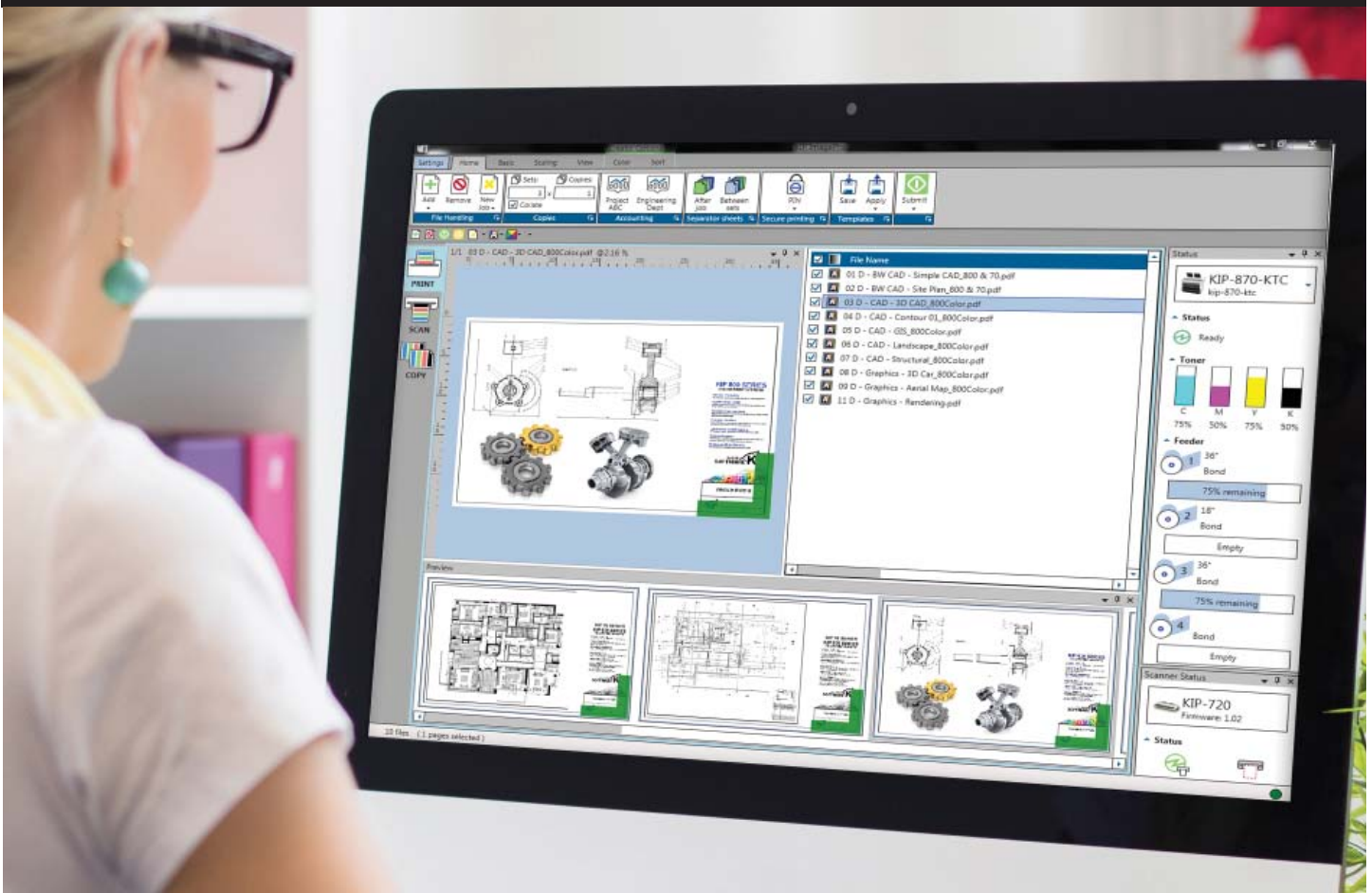
Confidently print to front or back stackers, knowing the order is correct. Smart!

### Simple CAD & Graphics Presets

Casual operators will appreciate Standard CAD and Graphics Presets to eliminate color management guess work.

### Thumbnail Preview

Quickly snap to a file with one simple "click". Live view of stamps, color vs b&w and automatic title block recognition for KIPFold users. Easy job management!



### Slide Out Device & Job Status

Mouse over tabs to instantly see the Job Queue, Printer or Scanner status. Fast access to system information!

### Quick Access Tool Bar

Printer driver simplicity using the Quick Access tool bar increases efficiency & decreases clicks. Easy file printing!

### Workflow Automation

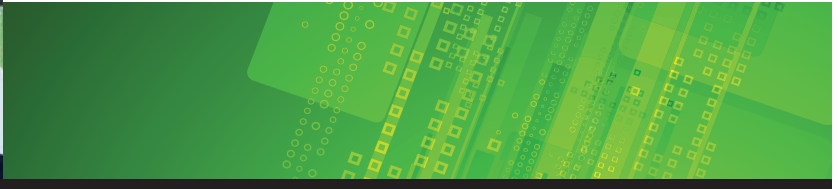
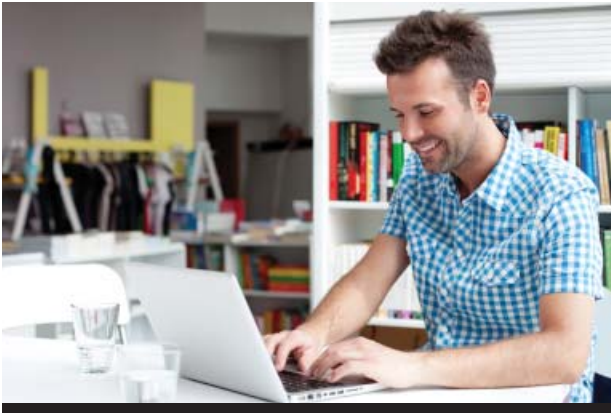
Group common settings in Templates for quick access to print, scan or copy. Easy workflow automation!

### Image Cleanup

Adjust image quality during scanning or printing with digital droppers to boost black lines and clean up background. Copies and prints are better than the original. Simple Tools!

### KIPFold Integration

Automatic Title Block recognition and preconfigured Fold Presets remove the guesswork from folding. True integration!



## Expanded Mode Features

Features for technical production and color graphic professionals

### Column Logic for Job Building, Scanning & Copying

Ultimate parameter control for single and multipage files. Position tools and enable important features. Easily edit large job sets with cut/paste.

### High Definition Viewer

Scroll in tight to view fine details. Enable Filter Effects to view Print Quality, PS/PDF and Spot Color Adjustments.

### Quick Access Tool Bar

Increase productivity by adding the most commonly used tools to the Quick Access Tool Bar.

### Color Management, Color Filters & Color Exchange

Everyone can be a color expert. Professional tools for changing color space, using ICC profiles, filters for black and white point settings for fast feedback from active high definition viewing.

### Customizable Interface with "Pop-Out" Panels

Empower important features with Pop Out Panels. Position color adjustment tools or move the Job Queue to a second monitor... there is no limit to the customization that your profession requires.

### System Presets

Maximize workflows with standardized job settings for all System K software apps. Shared or Private System Presets permit individualization of scaling, stamps and color and b&w adjustments.

### Job History

Enable Job History size or count to recall previous jobs. Add or remove pages, modify scaling, color and b&w adjustments, then print.

### Job Validation

Identify potential issues prior to printing. Selected warning messages for invalid parameters for PDF Fonts, Page Clipping, Mismatched Roll Size or Media Type.

### Active Device and Job Status

Printer and scanner info is graphically presented with a simple glance of the Status Panels. Email notification informs teams of status, media and toner needs.





### KIP Accounting Integration

Allocate print and copy volumes to departments and projects. Assign color or b&w, print and scan features to individuals or teams with Role Based Accounting.

### Flexibility in System Configuration

ImagePro provides the ultimate in workflow flexibility. Configure KIP 720 & 2300 as a stand-alone device for production Copy and Scan-to-file.

# KIP System K Software Diagram

## KIP 70 Series



### KIP 70, 800 and 900 Series Multi-touch Solutions

- Copy & Scan to Local/USB/LAN/Cloud (MFP)
- Print from Local/USB/LAN/Cloud
- Super View with Area of Interest
- Cloud Connect
- Data Security
- Smart Scan
- KIPFold Control

#### OPTIONS:

- Removable HD
- Card Reader



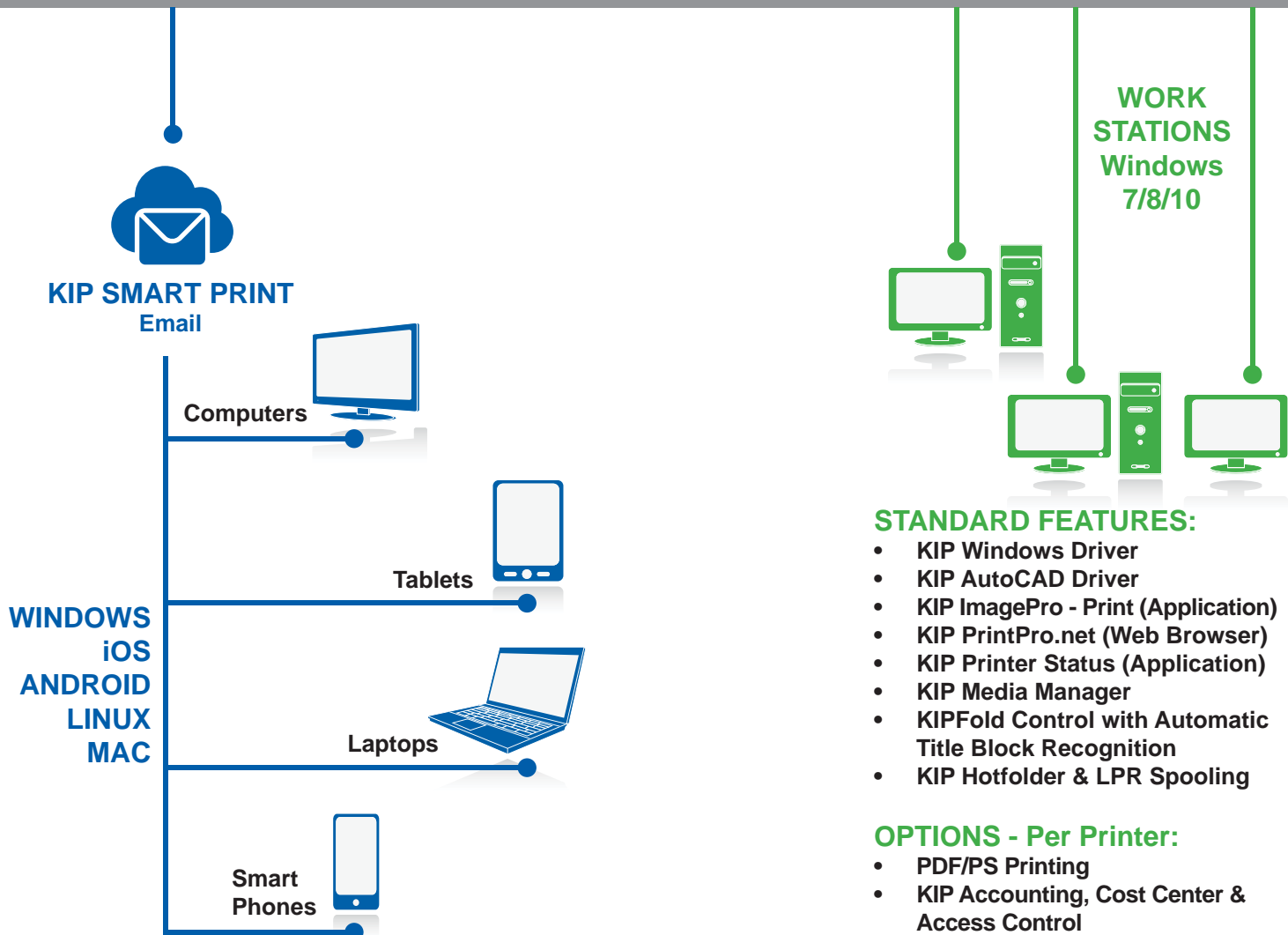
#### MFP

KIP 770 / 71 / 75 / 79

#### Printer

75 / 79

## LAN



WINDOWS  
iOS  
ANDROID  
LINUX  
MAC



### KIP 800 Color Series

### KIP 900 Color Series

### KIP 720 / 2300 Scan Systems Scan, Copy & Print



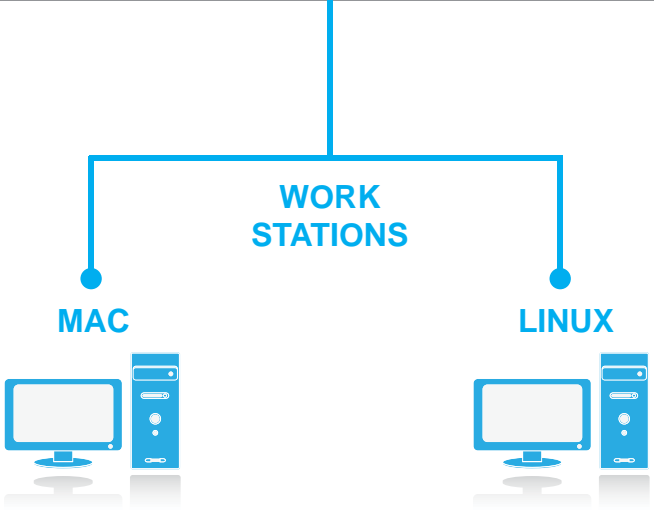
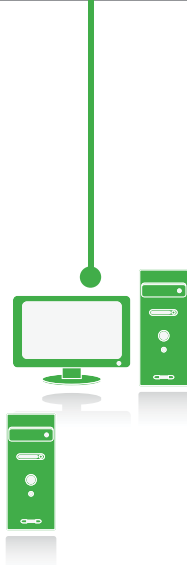
**MFP**  
KIP 860 / 880 / 890

**Printer**  
850 / 870

**MFP**  
KIP 980 / 990

**Printer**  
KIP 970

- KIP ImagePro - Scan & Copy:**
- Scan - Local/USB/LAN/Cloud
  - Copy - To KIP Color or B&W printer
  - Print - To KIP Color or B&W printer
  - Color Adjustment / Management
  - High Definition Viewer
  - Area of Interest
  - KIPFold Control



- STANDARD FEATURES:**
- KIP PrintPro.Net (Web Browser)
  - PostScript Printer Description File
  - KIP Hotfolder Support
  - LPR Spooling

- STANDARD FEATURES:**
- KIP PrintPro.Net (Web Browser)
  - KIP Hotfolder Support
  - LPR Spooling

**Comprehensive KIP System K features are available in the following brochures:**

- KIP Multi-touch Solutions
- KIP PC & Web Print Solutions
- KIP Admin, Accounting & Access Control



[www.kip.com](http://www.kip.com) | [KIP America: \(800\) 252-6793](http://KIP America: (800) 252-6793) | [info@kip.com](mailto:info@kip.com) | [KIP Canada: \(800\) 653-7552](http://KIP Canada: (800) 653-7552) | [info@kipcanada.com](mailto:info@kipcanada.com)

KIP is a registered trademark of the KIP Group. All other product names mentioned herein are trademarks of their respective companies. All product features and specifications are subject to change without notice. Complete product specifications are available upon request. © 2017